

JAMA | Original Investigation

# Effect of High-Dose Vitamin D Supplementation on Volumetric Bone Density and Bone Strength

## A Randomized Clinical Trial

Lauren A. Burt, PhD; Emma O. Billington, MD, FRCPC; Marianne S. Rose, PhD; Duncan A. Raymond, MS; David A. Hanley, MD, FRCPC; Steven K. Boyd, PhD

**IMPORTANCE** Few studies have assessed the effects of daily vitamin D doses at or above the tolerable upper intake level for 12 months or greater, yet 3% of US adults report vitamin D intakes of at least 4000 IU per day.

**OBJECTIVE** To assess the dose-dependent effect of vitamin D supplementation on volumetric bone mineral density (BMD) and strength.

**DESIGN, SETTING, AND PARTICIPANTS** Three-year, double-blind, randomized clinical trial conducted in a single center in Calgary, Canada, from August 2013 to December 2017, including 311 community-dwelling healthy adults without osteoporosis, aged 55 to 70 years, with baseline levels of 25-hydroxyvitamin D (25[OH]D) of 30 to 125 nmol/L.

**INTERVENTIONS** Daily doses of vitamin D<sub>3</sub> for 3 years at 400 IU (n = 109), 4000 IU (n = 100), or 10 000 IU (n = 102). Calcium supplementation was provided to participants with dietary intake of less than 1200 mg per day.

**MAIN OUTCOMES AND MEASURES** Co-primary outcomes were total volumetric BMD at radius and tibia, assessed with high resolution peripheral quantitative computed tomography, and bone strength (failure load) at radius and tibia estimated by finite element analysis.

**RESULTS** Of 311 participants who were randomized (53% men; mean [SD] age, 62.2 [4.2] years), 287 (92%) completed the study. Baseline, 3-month, and 3-year levels of 25(OH)D were 76.3, 76.7, and 77.4 nmol/L for the 400-IU group; 81.3, 115.3, and 132.2 for the 4000-IU group; and 78.4, 188.0, and 144.4 for the 10 000-IU group. There were significant group × time interactions for volumetric BMD. At trial end, radial volumetric BMD was lower for the 4000 IU group (−3.9 mg HA/cm<sup>3</sup> [95% CI, −6.5 to −1.3]) and 10 000 IU group (−7.5 mg HA/cm<sup>3</sup> [95% CI, −10.1 to −5.0]) compared with the 400 IU group with mean percent change in volumetric BMD of −1.2% (400 IU group), −2.4% (4000 IU group), and −3.5% (10 000 IU group). Tibial volumetric BMD differences from the 400 IU group were −1.8 mg HA/cm<sup>3</sup> (95% CI, −3.7 to 0.1) in the 4000 IU group and −4.1 mg HA/cm<sup>3</sup> in the 10 000 IU group (95% CI, −6.0 to −2.2), with mean percent change values of −0.4% (400 IU), −1.0% (4000 IU), and −1.7% (10 000 IU). There were no significant differences for changes in failure load (radius, *P* = .06; tibia, *P* = .12).

**CONCLUSIONS AND RELEVANCE** Among healthy adults, treatment with vitamin D for 3 years at a dose of 4000 IU per day or 10 000 IU per day, compared with 400 IU per day, resulted in statistically significant lower radial BMD; tibial BMD was significantly lower only with the 10 000 IU per day dose. There were no significant differences in bone strength at either the radius or tibia. These findings do not support a benefit of high-dose vitamin D supplementation for bone health; further research would be needed to determine whether it is harmful.

**TRIAL REGISTRATION** ClinicalTrials.gov Identifier: [NCT01900860](https://clinicaltrials.gov/ct2/show/study/NCT01900860)

JAMA. 2019;322(8):736-745. doi:10.1001/jama.2019.11889  
Corrected on November 19, 2019.

[+ Visual Abstract](#)

[+ Supplemental content](#)

**Author Affiliations:** McCaig Institute for Bone and Joint Health, Cumming School of Medicine, University of Calgary, Calgary, Canada (Burt, Billington, Raymond, Hanley, Boyd); Research Facilitation, Alberta Health Services, Calgary, Canada (Rose).

**Corresponding Author:** Steven K. Boyd, PhD, McCaig Institute for Bone and Joint Health, University of Calgary, 3280 Hospital Dr NW, Calgary, AB, T2N 4Z6, Canada ([skboyd@ucalgary.ca](mailto:skboyd@ucalgary.ca)).

Vitamin D supplementation has been considered beneficial for prevention and treatment of osteoporosis. Clinical trial data support skeletal benefits of vitamin D supplementation in persons with circulating 25-hydroxyvitamin D (25[OH]D) levels of less than 30 nmol/L.<sup>1,2</sup> However, recent meta-analyses do not support a major treatment benefit of vitamin D for osteoporosis<sup>3,4</sup> or preventing falls<sup>4</sup> or fractures.<sup>4,5</sup> Most vitamin D supplementation recommendations range from 400 to 2000 IU daily<sup>6,7</sup> with a tolerable upper intake level of 4000 IU to 10 000 IU<sup>6,8</sup>. Between 2013 and 2014, three percent of US adults consumed daily doses of at least 4000 IU of vitamin D<sup>9</sup>; one study assessed the effects of daily doses of greater than 4000 IU for at least 12 months, finding 6500 IU no different than 800 IU for changes in bone mineral density (BMD).<sup>10</sup>

The clinical diagnosis of osteoporosis and prediction of fracture risk relies on dual x-ray absorptiometry (DXA) scans measuring areal BMD at different skeletal sites. However, bone strength, an important component of fracture risk, is determined by a combination of bone mass, morphology, and microarchitecture.<sup>11</sup> High-resolution peripheral quantitative computed tomography (HR-pQCT) has higher resolution and sensitivity than DXA and assesses compartmental volumetric bone density, microarchitecture, and estimates of bone strength. In a prospective study with 7254 participants, HR-pQCT parameters were associated with fracture risk independently of DXA-measured areal BMD.<sup>11</sup> Vitamin D effects on the skeleton have not been prospectively assessed using HR-pQCT.

Motivated by the prevalence of high-dose vitamin D supplementation among healthy adults, this study explored the dose-response effects of daily vitamin D supplementation (400, 4000, 10 000 IU) on total volumetric BMD and bone strength in healthy community-dwelling adults over 3 years, while ensuring adequate calcium intake. It was hypothesized that a higher dose of vitamin D has a positive effect on HR-pQCT measures of volumetric density and strength, perhaps via suppression of parathyroid hormone (PTH)-mediated bone turnover.

## Methods

### Study Design and Oversight

This was a single-center, 3-year, double-blind, randomized clinical trial with 3 parallel groups (400, 4000, or 10 000 IU vitamin D<sub>3</sub> daily), undertaken between August 2013 and December 2017 (trial protocol in [Supplement 1](#) and statistical analysis plan in [Supplement 2](#)). Participants were recruited from the general population by means of letter, posters, and public media.<sup>12</sup> The trial was approved by the Conjoint Health Research Ethics Board at the University of Calgary and Health Canada. Each participant provided written informed consent before randomization.

### Participants

Healthy men and women aged 55 to 70 years were eligible if they had a DXA lumbar spine and total hip areal BMD T score greater than -2.5 SD, serum 25(OH)D between 30 and 125 nmol/L, and normal serum calcium (2.10-2.55 mmol/L). Par-

## Key Points

**Question** Does higher-dose vitamin D supplementation improve bone mineral density (BMD, measured using high-resolution peripheral quantitative computed tomography) and bone strength (measured as failure load)?

**Findings** In this randomized clinical trial that included 311 healthy adults, treatment with vitamin D for 3 years at a dose of 4000 IU per day or 10 000 IU per day, compared with 400 IU per day, resulted in statistically significant lower radial BMD (calcium hydroxyapatite; -3.9 mg HA/cm<sup>3</sup> and -7.5 mg HA/cm<sup>3</sup>, respectively); tibial BMD was significantly lower only with the daily dose of 10 000 IU. There were no significant differences in bone strength at either the radius or tibia.

**Meaning** Among healthy adults, supplementation with higher doses of vitamin D did not result in improved bone health; further research would be needed to determine whether it is harmful.

ticipants were excluded if their screening serum 25(OH)D was less than 30 nmol/L or greater than 125 nmol/L; serum calcium was greater than 2.55 mmol/L or less than 2.10 mmol/L; or vitamin D supplement use was greater than 2000 IU per day for the past 6 months. Further exclusions included use of bone active medication within the last 2 years; disorders known to affect vitamin D metabolism such as sarcoidosis, renal failure, malabsorption disorders, kidney stone within the past 2 years, or regular use of tanning salons; DXA T score compatible with osteoporosis at the lumbar spine, total hip or femoral neck; and high 10-year risk ( $\geq 20\%$ ) for osteoporotic fracture (as defined by the World Health Organization's Canadian FRAX calculator). Participants with DXA T scores between -1.0 and -2.5 (low bone density) were not excluded. Participant-reported race/ethnicity (non-Hispanic white, non-Hispanic black, Asian, Hispanic) was captured due to possible differences in vitamin D metabolism.<sup>13</sup>

### Randomization and Masking

A statistician unrelated to the trial generated a randomization table, assigning participants in 1:1:1 ratio to receive cholecalciferol (vitamin D<sub>3</sub>) 400, 4000, or 10 000 IU orally once daily, stratified by sex. Randomization was performed within sex using simple randomization in block sizes of 60 or 30 and were not revealed to the research team prior to allocation. Participants and the research team were blinded to allocation.

### Procedures

Participants were prescribed vitamin D<sub>3</sub> liquid drops (5 drops/d) orally. Preparations (80 IU/drop, 800 IU/drop, or 2000 IU/drop) were provided and checked for quality by Ddrops Canada. Adherence to treatment was assessed from daily diaries and calculated as number days of supplement administration vs total number of days of follow-up, expressed as a percentage.

Participants were requested to take no more than 200 IU per day of additional vitamin D (eg, a multivitamin supplement). Because the estimated median contribution of vitamin D from diet is approximately 200 IU,<sup>6</sup> the participants randomized to 400 IU per day received the recommended dietary

allowance of 600 IU for adults younger than age 70 years.<sup>6</sup> Calcium intake was assessed by a food frequency questionnaire.<sup>14</sup> Participants not consuming the recommended dietary allowance of calcium (1200 mg/d)<sup>15</sup> received calcium citrate tablets (each containing 300 mg elemental calcium) as needed ( $\leq$ maximum of 600 mg/d) to approximate a total daily intake of 1200 mg.

### Outcomes

Primary outcome variables (Supplement 1) were based on HR-pQCT measurements of total volumetric BMD at the distal radius and tibia and bone strength (failure load) by finite element analysis at the distal radius and tibia for a total of 4 coprimary variables. Observation of a significant benefit at 1 skeletal site in either volumetric BMD or bone strength was regarded as a positive result at that site. Secondary bone outcomes included total hip areal BMD by DXA, HR-pQCT measures of cortical and trabecular volumetric BMD, cortical porosity, and trabecular number. Balance (postural sway), physical function (timed up and go; grip strength) and quality of life (SF36 questionnaire) were additional secondary outcomes. Safety outcomes, defined a priori, were as follows: all serious adverse events, hypercalcemia, hypercalciuria, renal dysfunction, nephrolithiasis, hepatic dysfunction, falls, fragility fractures, and cancer.

Total volumetric BMD and bone microarchitecture were assessed by HR-pQCT (nominal isotropic voxel of 60.7  $\mu$ m, XtremeCT II, Scanco Medical) at baseline, 6, 12, 24, and 36 months. Three-dimensional image registration was applied to ensure the same region of interest was assessed longitudinally.<sup>16</sup> Failure load was estimated by finite element analysis (FAIM, version 8.0, Numerics88 Solutions). Areal BMD was measured annually by DXA (GE Lunar iDXA, GE Healthcare, enCORE v16). Precision scores for HR-pQCT range from less than 2.4% for density to greater than 3.3% for microarchitecture parameters, with the exception of cortical porosity ( $<$ 13.7%).<sup>17</sup> DXA precision is 0.55% coefficient of variation for the total hip.

Postural sway was assessed (Biosway machine, 950-460, Biodex) on a foam surface with eyes closed.<sup>18</sup> Grip strength was measured using the Jamar 200-lb hand dynamometer (12-0600).<sup>19</sup> A standard assessment of timed up and go was evaluated.<sup>20</sup> Participants completed a self-administered SF-36 v2 to assess quality of life.<sup>21</sup> Assessments of physical function and questionnaires were completed during annual visits.

All blood and urine clinical chemistry measures were performed at Calgary Laboratory Services (CLS) as fasting morning samples and processed in real time. Serum 25(OH)D was measured by DiaSorin Liaison XL system; CLS participates in the Vitamin D External Quality Assessment Scheme (DEQAS). Serum intact PTH was measured using the DiaSorin Liaison 1-84 PTH assay. C-telopeptide of type I collagen (CTX) was measured by Cobas e immunoassay analyzer ECLIA. Mean immunoassay coefficient of variation at CLS was 2.5% to 8.6% for 25(OH)D, 6.0% to 7.1% for PTH, and 3.9% to 4.2% for CTX. To ensure the avoidance of vitamin D toxicity, as manifested by hypercalciuria or hypercalcemia, calcium and creatinine were assessed via blood and urine collection (24-hour urine at base-

line and months 12, 24, and 36, second void urine sample at months 6, 18, and 30) and monitored by the physician investigators (E.O.B. and D.A.H.) throughout the study.

At each visit, participants reported new or ongoing medical issues and hospitalizations in an interview-style discussion with a member of the study team. Serious adverse events were defined as events that were fatal or life-threatening, or which resulted in hospitalization or prolongation of existing hospital stay, or caused persistent or significant incapacity or disability. Serious adverse events were adjudicated by the study physicians, and falls and fractures were adverse events of special interest. Fractures of the fingers and toes and traumatic fractures were not included. Fractures were reviewed by study clinicians via participant medical records and x-ray reports where available. Low-trauma (fragility) fractures were defined as resulting from low trauma, such as a fall from standing height or less.

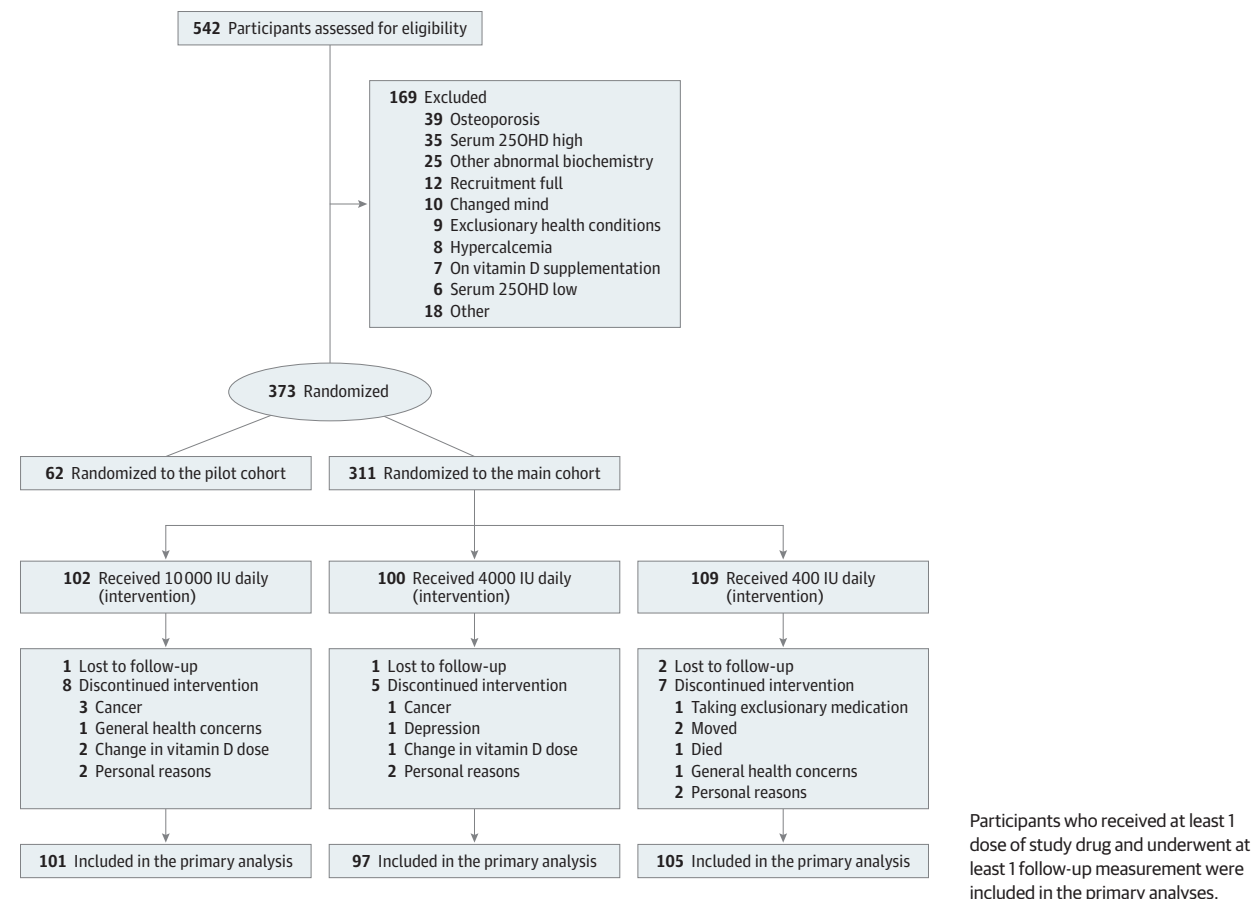
### Statistical Analysis

Sample size estimation was based on primary outcome variables of total volumetric BMD at the tibia and radius. The 4 coprimary outcome variables are highly correlated and therefore each variable was tested at the  $\alpha$  level of .025. In a population-based prospective cohort of postmenopausal women, an annual decrease of approximately 1.8% was observed over 3 years for radial total volumetric BMD.<sup>22</sup> Assigning the 400-IU group a more conservative annual decline of 1.2% (values greater than 1.2% would require a smaller sample size), the minimal clinically relevant benefit for the 4000-IU group would be improving the rate of decline by 50% or more (1.2%-0.6% annually) and for the 10 000-IU group arresting the rate of decline to 0%, (Supplement 2). Based on sample size calculations and allowing for 20% attrition, a total of 300 participants gave 90% power at an  $\alpha$  level of .025. All *P* values were 2-sided and a *P* value of less than .05 was set for secondary variables and safety parameters. Because of the potential for type 1 error due to multiple comparisons, findings for analyses of secondary end points should be interpreted as exploratory.<sup>23</sup>

Participants who received at least 1 dose of study drug and at least 1 follow-up visit were included in the primary analysis. A constrained linear mixed-effects model<sup>24</sup> was used to analyze each outcome variable. Fixed effects included treatment group, a quadratic effect of time if warranted, and a treatment  $\times$  time interaction, which if statistically significant, indicated a significant treatment effect. Random effects included time in which both intercept and slope could vary. The correlation within participants was modeled as an autoregressive error of order 1. Missing data were accounted for by using the mixed-effects model.<sup>25</sup>

All participants, irrespective of number of follow-up visits, were included in the safety analysis. Safety outcomes were reported as the proportion of participants in each group who experienced serious and prespecified adverse events. Adverse events were examined formally (provided the overall prevalence of the adverse event was  $\geq$ 4% and  $\leq$ 96%) for between-treatment group differences for trend in proportions using logistic regression.<sup>26</sup> The adverse event (yes or no) was the binary outcome variable and the dose (400 IU, 4000 IU,

Figure 1. Flow Diagram of Participants Through the Study



or 10 000 IU) was the explanatory variable in this simple logistic regression.

Analyses were conducted using the R project for Statistical Computing (R, version 3.4). An independent data safety and monitoring board oversaw the study.

## Results

The flow of participants is presented in **Figure 1**. A total of 542 participants were screened, 311 met inclusion criteria and were randomized, and 287 (92%) completed all aspects of the 3-year trial. The primary analyses included 303 participants. Baseline demographic information is shown in **Table 1**. The cohort was 53% men, and predominantly white (95%). Classified by DXA T score, participants had normal (81%) or low (19%) total hip areal BMD.

Eleven participants discontinued the study supplement but continued follow-up (400 IU, 2; 4000 IU, 3; 10 000 IU, 6). Reasons for discontinuing included starting or stopping hormone therapy, concerns with kidney function or stones, decision to take other vitamin D supplementation, and possible hyperparathyroidism. The mean vitamin D supplementation adherence was 99% (range, 81%-100%) for participants who completed the trial on study supplement. There were no significant differ-

ences in adherence between treatment groups. Mean serum 25 (OH)D measurements did not change for the 400-IU group from baseline through 36 months (76.3-77.4 nmol/L). A significant increase in mean serum 25(OH)D from baseline was seen in the 4000-IU group at 3 months (81.3-115.3 nmol/L) with a further increase to 132.2 nmol/L by month 36. The baseline to 3 month increase in the 10000-IU group (78.4-188.0 nmol/L), increased to 200.4 nmol/L at 18 months but fell to 144.4 nmol/L at 36 months (**Figure 2**; **eTable 1** and **eFigure 1** in **Supplement 3**). In addition, many study participants (76%) received calcium supplements throughout the study; more than half (65%) took a single 300 mg tablet per day.

Some participants had missing HR-pQCT data due to motion artifact (12 participants had at least 1 radius scan removed) or inadequate (<75%) overlap in scan region across all study visits (13 participants had radius scans at one time point removed). One participant had all radius scans removed due to motion and inadequate scan region overlap.

### Primary Outcomes

Data distribution and changes in volumetric bone density and strength are displayed in **Figure 3**. Group  $\times$  time interactions were significant in total volumetric BMD at the tibia ( $P < .001$ ) and radius ( $P < .001$ ). At both sites, total volumetric BMD displayed a negative dose-response relationship (**Figure 3**; **eTable 2**

Table 1. Baseline Demographic, Health Characteristics, and Laboratory Values

Variable	No. (%)		
	10 000 IU	4000 IU	400 IU
No. of participants	101	97	105
Demographics			
Sex			
Men	53 (52.5)	50 (51.5)	60 (57.1)
Women	48 (47.5)	47 (48.5)	45 (42.9)
Age, mean (SD), y	61.9 (4.1)	62.6 (4.3)	62.2 (4.2)
Years since menopause, mean (SD), y	12.5 (5.6)	11.7 (7.3)	12.6 (5.9)
BMI, mean (SD) <sup>a</sup>	27.1 (4.1)	28.1 (5.0)	27.7 (4.3)
Body fat, mean (SD), %	32.2 (8.4)	34.0 (8.9)	33.3 (9.0)
Race/ethnicity			
Non-Hispanic white	98 (97.0)	94 (96.9)	98 (93.3)
Non-Hispanic black	0	1 (1.0)	1 (1.0)
Asian	2 (2.0)	2 (2.1)	5 (4.7)
Hispanic	1 (1.0)	0	1 (1.0)
Health characteristics, mean (SD)			
Systolic blood pressure, mm Hg	125.6 (16.0)	131.6 (16.7)	128.5 (15.4)
Diastolic blood pressure, mm Hg	80.4 (10.5)	80.8 (8.3)	81.1 (7.7)
Vitamin D supplementation <sup>b</sup>	34 (34)	38 (39)	32 (30)
Medical history			
Skin cancer <sup>c</sup>	15 (14.9)	7 (7.2)	12 (11.4)
Other cancer	10 (9.9)	7 (7.2)	5 (4.8)
Cardiovascular-related diagnoses	13 (12.9)	10 (10.3)	21 (20.0)
Type 2 diabetes	3 (3.0)	4 (4.1)	2 (1.9)
Rheumatoid arthritis	1 (1.0)	2 (2.1)	1 (1.0)
Asthma	9 (8.9)	6 (6.2)	5 (4.8)
Smoker	4 (4.0)	0	2 (1.9)
Falls <sup>d</sup>	18 (17.8)	20 (20.6)	22 (21.0)
Fracture after age 50 y	17 (16.8)	13 (13.4)	17 (16.2)
Lumbar spine T score <sup>e</sup>	0.1 (1.5)	0.2 (1.3)	0.0 (1.5)
Total hip T score <sup>f</sup>	0.0 (1.1)	0.2 (1.1)	0.1 (1.1)
Laboratory values			
Serum			
25(OH)D, nmol/L	78.4 (18.4)	81.3 (20.1)	76.7 (21.0)
PTH, ng/L	22.1 (7.4)	21.5 (6.6)	22.2 (7.7)
Calcium, mmol/L	2.4 (0.1)	2.4 (0.1)	2.4 (0.1)
Phosphate, mmol/L	1.0 (0.1)	1.0 (0.2)	1.0 (0.2)
Creatinine, $\mu$ mol/L	80.1 (14.4)	79.7 (15.1)	80.7 (13.9)
Alkaline phosphatase, U/L	70.1 (17.1)	65.8 (15.3)	69.1 (18.1)
Estimated GFR, mL/min/1.73m <sup>2</sup>	80.2 (11.4)	80.3 (12.0)	80.7 (11.2)
24-h Urine calcium, mmol/d	4.2 (2.0)	4.8 (2.1)	4.2 (2.0)
Plasma CTx ( $\beta$ -crosslaps), ng/L <sup>g</sup>	344.9 (126.6)	339.4 (130.7)	335.5 (118.8)
Fasting blood glucose, mg/dL	102.6 (12.6)	102.6 (5.4)	102.6 (5.4)
Hemoglobin A <sub>1c</sub> , %	5.2 (1.6)	5.1 (0.6)	5.1 (0.8)

Abbreviations: BMI, body mass index; CTx, C-telopeptide of type 1 collagen ( $\beta$ -crosslaps); GFR, glomerular filtration rate; PTH, parathyroid hormone; 25(OH)D, 25-hydroxyvitamin D.

<sup>a</sup> Calculated as weight in kilograms divided by height in meters squared.

<sup>b</sup> Supplementation between 1000 and 2000 IU daily at screening.

<sup>c</sup> Includes melanoma.

<sup>d</sup> Number of falls in the last year.

<sup>e</sup> Lumbar spine T scores range from 4.7 to -2.4 meaning participants were not osteoporotic (osteoporosis is defined as a T score below -2.5).

<sup>f</sup> Total hip T scores range from 3.8 to -2.3 meaning participants were not osteoporotic (osteoporosis is defined as a T score below -2.5).

<sup>g</sup> A marker of bone resorption.

in Supplement 3)—greater losses associated with higher dose of vitamin D supplementation. At trial end, the difference between the 4000 and 400 IU group was -3.9 mg hydroxyapatite (HA)/cm<sup>3</sup> (95% CI, -6.5 to -1.3) and between the 10 000 and 400 IU group was -7.5 mg HA/cm<sup>3</sup> (95% CI, -10.1 to -5.0) for total volumetric BMD at the radius, based on mixed-model analysis. This is equivalent to changes from the mean baseline values of -1.2% (400-IU group), -2.4% (4000-IU

group) and -3.5% (10 000-IU group) at the radius. For mixed-model analysis of total volumetric BMD at the tibia, the equivalent differences between groups were -1.8 mg HA/cm<sup>3</sup> (95% CI, -3.7 to 0.1; not statistically significant) in the 4000-IU group and -4.1 mg HA/cm<sup>3</sup> (95% CI, -6.0 to -2.2) in the 10 000-IU group; equivalent mean changes from baseline were -0.4% (400 IU-group), -1.0% (4000 IU-group) and -1.7% (10 000 IU-group). Bone strength decreased over trial duration; however,

group  $\times$  time interactions were not significant (radius,  $P = .06$ ; tibia,  $P = .12$ ).

### Secondary Outcomes

For secondary outcomes, the point estimates represent the difference for 4000 or 10 000 IU compared with the 400 IU at 36 months. There were significant group  $\times$  time interactions for cortical volumetric BMD of the radius ( $P = .001$ ;  $-6.3$  [95% CI,  $-11.1$  to  $-1.5$ ] for 4000 IU and  $-8.6$  [95% CI,  $-13.3$  to  $-3.8$ ] for 10 000 IU) and tibia ( $P = .004$ ;  $-4.2$  [95% CI,  $-9.8$  to  $1.2$ ] for 4000 IU and  $-9.8$  [95% CI,  $-14.8$  to  $-4.0$ ] for 10 000 IU), for trabecular volumetric BMD of the radius ( $P = .01$ ;  $-0.95$  [95% CI,  $-2.6$  to  $0.7$ ] for 4000 IU and  $-2.71$  [95% CI,  $-4.3$  to  $-1.1$ ] for 10 000 IU; eFigure 2 and eFigure 3 in Supplement 3), and for trabecular number for the radius ( $P = .01$ ;  $0.003$  [95% CI,  $-0.013$  to  $0.018$ ] for 4000 IU and  $-0.019$  [95% CI,  $-0.035$  to  $-0.004$ ] for 10 000 IU; eTable 3, eFigure 4, and eFigure 5 in Supplement 3). As observed with total volumetric BMD, cortical BMD results also demonstrated larger losses in bone density associated with higher dose of vitamin D at both sites. Trabecular volumetric BMD increased over trial duration with the 10 000-IU group gaining the least amount of bone density at the radius.

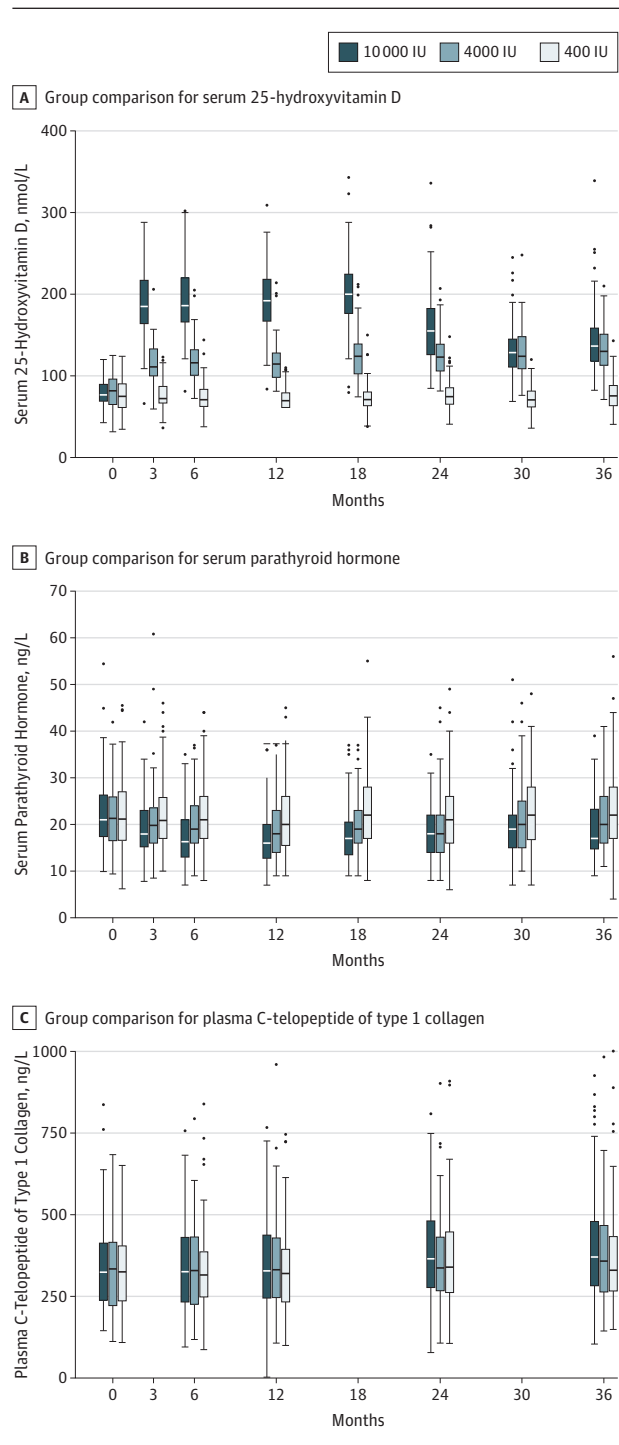
Group  $\times$  time interactions were not statistically significant for trabecular volumetric BMD of the tibia ( $P = .13$ ;  $0.20$  [95% CI,  $-0.1$  to  $1.5$ ] for 4000 IU and  $-1.1$  [95% CI,  $-2.4$  to  $0.2$ ] for 10 000 IU), cortical porosity of the radius ( $P = .37$ ;  $0.06$  [95% CI,  $-0.025$  to  $0.15$ ] for 4000 IU and  $0.04$  [95% CI,  $-0.043$  to  $0.13$ ] for 10 000 IU) and tibia ( $P = .89$ ;  $0.01$  [95% CI,  $-0.17$  to  $0.19$ ] for 4000 IU and  $0.04$  [95% CI,  $-0.13$  to  $0.22$ ] for 10 000 IU), and trabecular number for the tibia ( $P = .20$ ;  $-0.01$  [95% CI,  $-0.03$  to  $0.01$ ] for 4000 IU and  $-0.02$  [95% CI,  $-0.04$  to  $0.004$ ] for 10 000 IU).

DXA total hip areal BMD remained stable over the duration of the trial with no significant differences between groups ( $P = .87$ ;  $0.0007$  [95% CI,  $-0.0064$  to  $0.0078$ ] for 4000 IU and  $0.0019$  [95% CI,  $-0.0052$  to  $0.0090$ ] for 10 000 IU; eTable 3 and eTable 4 in Supplement 3). Differences between all 3 treatment groups at 3 years were less than 0.2%. There were no significant changes in balance ( $P = .12$ ;  $-0.005$  [95% CI,  $-0.09$  to  $0.08$ ] for 4000 IU and  $-0.08$  [95% CI,  $-0.17$  to  $0.004$ ] for 10 000 IU), grip strength ( $P = .92$ ;  $-0.12$  [95% CI,  $-1.4$  to  $1.1$ ] for 4000 IU and  $-0.26$  [95% CI,  $-1.5$  to  $1.0$ ] for 10 000 IU), timed up-and-go ( $P = .27$ ;  $0.38$  [95% CI,  $-0.11$  to  $0.86$ ] for 4000 IU and  $0.31$  [95% CI,  $-0.18$  to  $0.79$ ] for 10 000 IU), or quality of life ( $P = .57$  for the mental component summary;  $0.70$  [95% CI,  $-0.8$  to  $2.2$ ] for 4000 IU and  $0.71$  [95% CI,  $-0.8$  to  $2.2$ ] for 10 000 IU).

PTH decreased between baseline and month 18 and was lowest in the 10 000-IU group (eFigure 1 in Supplement 3). CTx increased throughout the study, being highest in the 10 000-IU group (eFigure 1 in Supplement 3).

After study completion and removal of blinding, a decline in 25(OH)D was detected in the 10 000-IU group at the 24-month assessment. Upon investigation, it was determined that without the knowledge of investigators, Ddrops changed its manufacturing laboratory source, and the long-term stability of the 2000 IU per drop solution was reduced.

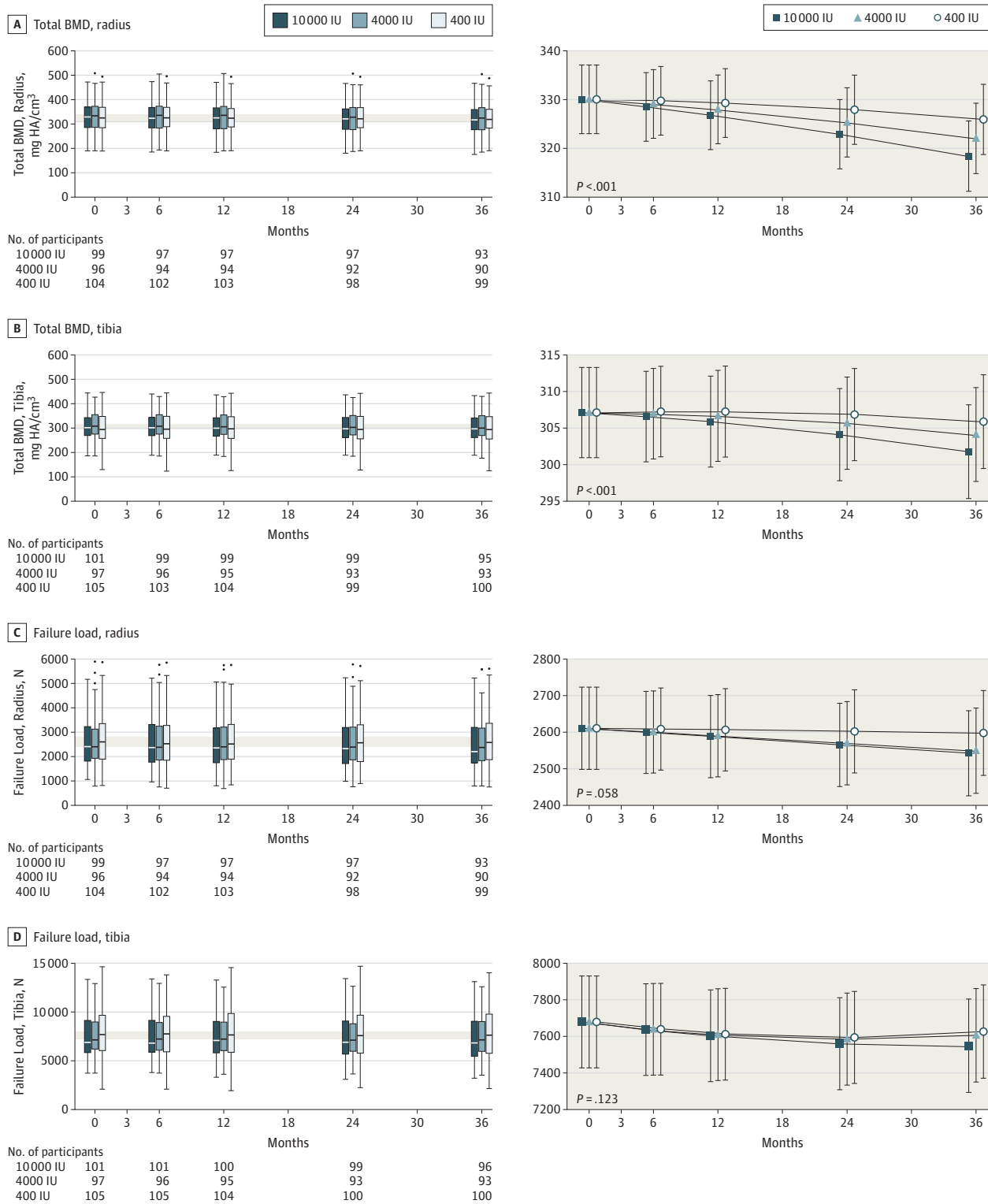
**Figure 2. Data Distribution for Serum 25-Hydroxyvitamin D, Parathyroid Hormone, and C-Telopeptide of Type 1 Collagen Throughout the 3-Year Study**



The horizontal line in the middle of each box indicates the median, the top and bottom borders of the box mark the 75th and 25th percentiles, the whiskers above and below the box indicate the 90th and 10th percentiles, and the points beyond the whiskers are outliers beyond the 90th or 10th percentiles.

This change began affecting the 10 000-IU group between 18 and 24 months (depending on participant progress through the

Figure 3. Data Distribution and Change in Total Bone Mineral Density (BMD) and Failure Load During 3 Years of Vitamin D Supplementation



The horizontal line in the middle of each box (left column) indicates the median, the top and bottom borders of the box mark the 75th and 25th percentiles, the whiskers above and below the box indicate the 90th and 10th percentiles, and the points beyond the whiskers are outliers beyond the 90th or 10th

percentiles. The modeled data (right column) show the mean 95% CIs for the predicted values using the random-effects model. P values indicate the group × time interaction effect.

Table 2. Summary of Prespecified Adverse Events in Healthy Adults Taking Vitamin D Supplementation 400 IU, 4000 IU, or 10 000 IU Daily for 3 Years<sup>a</sup>

	10 000 IU (n = 102)		4000 IU (n = 100)		400 IU (n = 109)	
	Total Events, No.	Participants With Events, No. (%)	Total Events, No.	Participants With Events, No. (%)	Total Events, No.	Participants With Events, No. (%)
Serious adverse events <sup>b</sup>	14	14 (14)	10	8 (8)	20	16 (15)
Hypercalcemia <sup>c</sup>	10	9 (9)	4	4 (4)	0	0
Hypercalciuria <sup>d</sup>	54	34 (33)	34	22 (22)	25	19 (17)
Renal dysfunction <sup>e</sup>	4	2 (2)	2	2 (2)	1	1 (1)
Nephrolithiasis	2	1 (1)	1	1 (1)	0	0
Hepatic dysfunction <sup>f</sup>	3	3 (3)	3	3 (3)	8	5 (5)
Falls	6	5 (5)	11	10 (10)	4	4 (4)
Low-trauma fractures <sup>g</sup>	5	5 (5)	3	3 (2)	4	4 (4)
Cancer <sup>h</sup>	5	5 (5)	3	3 (3)	1	1 (1)

Abbreviations: ALT, alanine aminotransferase; AST, aspartate aminotransferase; ULN, upper limit of normal.

SI units: to convert ALT and AST to  $\mu\text{kat/L}$ , multiply by 0.0167.

<sup>a</sup> Any participant who was randomized and received at least 1 dose of study drug was included in this table.

<sup>b</sup> Serious adverse events were determined using the standard International Conference on Harmonization Good Clinical Practice definition.

<sup>c</sup> Hypercalcemia indicates a serum calcium level greater than 2.55 mmol/L.

<sup>d</sup> Hypercalciuria indicates 24-hour urine calcium excretion exceeding 7.5 mmol per day for participants of less than 75 kg body weight or greater than 0.1 mmol/kg per day for those with body weight of 75 kg or greater.

<sup>e</sup> Renal dysfunction indicates a serum creatinine level of greater than 133  $\mu\text{mol/L}$ .

<sup>f</sup> Hepatic dysfunction indicates AST or ALT greater than 1.5  $\times$  ULN. AST ULN is indicated by 32 U/L for women and 40 U/L for men. ALT ULN is indicated by 40 U/L for women and 60 U/L for men.

<sup>g</sup> Low-trauma (fragility) fractures were defined as resulting from low trauma (eg, a fall from  $\leq$ standing height).

<sup>h</sup> Cancer includes all nonskin cancers and melanoma.

study). With independent third-party testing and information from Ddrops, participants began receiving a dose estimated to vary between 2000 and 10 000 IU per day. Despite reduced supplementation, mean 25(OH)D levels remained higher than the 4000-IU group throughout the study.

Prespecified safety outcomes are shown in Table 2. In total, 44 serious adverse events occurred in 38 (12.2%) participants. One death (presumed myocardial infarction) occurred in a participant in the 400-IU group. Among the prespecified adverse events, only hypercalcemia ( $P = .005$ ) and hypercalciuria ( $P = .006$ ) demonstrated a significant dose-response effect. All episodes of hypercalcemia were mild (2.56-2.64 mmol/L) and resolved on follow-up testing. One participant in the 10 000-IU group experienced 2 episodes of transient hypercalcemia (months 6 and 30). There was no significant difference in falls detected among the 3 groups.

## Discussion

This 3-year randomized clinical trial examined the effect of 3 daily doses of vitamin D: 400 IU, 4000 IU (the National Academy of Medicine [formerly the Institute of Medicine {IOM}] tolerable upper intake level), and 10 000 IU in healthy adults aged 55 to 70 years and failed to find a positive effect of vitamin D on volumetric BMD and estimated bone strength, as measured by HR-pQCT at the radius and tibia.

Instead of the hypothesized increase, a negative dose-response relationship was observed for volumetric BMD. Using the 400-IU group as a reference point, high-dose vitamin D supplementation (10 000 IU/d) was associated with a significantly greater loss of bone. Because these results are in the opposite direction of the research hypothesis, this evidence of high-dose vitamin D having a negative effect on bone should be regarded as hypothesis generating, requiring confirmation with further research. Therefore, the appropriate interpretation of this study is that for maintenance of bone quality in healthy vitamin D-sufficient adults, these results do not support a skeletal benefit of vitamin D doses well above the recommended dietary allowance.<sup>6</sup>

If the observed vitamin D dose-dependent loss of volumetric BMD seen in this trial represents a real effect, it might be related to the observed combination of an increased plasma marker of bone resorption (CTx) and suppression of PTH seen in the 10 000-IU group. High-dose vitamin D without extra calcium supplementation has been associated with increased levels of the active vitamin D metabolite 1, 25(OH)<sub>2</sub> vitamin D (calcitriol), and an increase in CTx.<sup>27</sup> Calcitriol stimulates osteoclastogenesis and differentiation, either through action on osteoblasts<sup>28</sup> or by direct action on osteoclast precursors.<sup>29</sup> High-dose vitamin D may also suppress PTH by direct action on parathyroid cells or indirectly by enhancing intestinal calcium absorption. This might reduce PTH-mediated bone formation, which when combined with a vitamin D-mediated direct effect on osteoclast activity (as supported by the trend to higher CTx in the 10 000-IU group), could result in the dose-related accelerated decline in observed volumetric BMD. The observation of an increased trabecular volumetric BMD while



cortical volumetric BMD declined may reflect this increase in resorption, leading to trabecularization of the endocortical surface of the cortex.

DXA findings in this study align with others showing non-significant changes in areal BMD at the total hip following high-dose vitamin D supplementation<sup>10,30-32</sup> and no additional benefit for high compared with low-dose supplementation.<sup>10,31-33</sup> These results are supported by a recent meta-analysis that did not support a public health recommendation for vitamin D supplementation for the prevention of falls, fractures, or beneficial effects on bone density.<sup>4</sup>

There is growing evidence that for bone, the benefit of vitamin D supplementation is only seen in the treatment of vitamin D deficiency.<sup>1,2</sup> There is also evidence that very high intermittent (monthly or annual) doses of vitamin D may be harmful, with increased risk of falls or fracture<sup>34,35</sup>; but not all such studies report increased risk of falls or fractures.<sup>36</sup> There was no effect on fall rates in this study and no evidence of a relationship between changes in volumetric BMD and fracture risk, which may reflect the healthy status of the population that was studied. However, if high-dose vitamin D does stimulate an increased rate of bone loss, this could have greater clinical significance in older individuals with osteoporosis.

Most of the prespecified safety outcomes occurred in all 3 vitamin D treatment groups. However, episodes of hypercalcemia and hypercalciuria were more common with increasing vitamin D dose, consistent with previous reports,<sup>37</sup> and the risk of hypercalcemia and hypercalciuria is higher in individuals taking calcium supplementation,<sup>38</sup> suggesting that supplemental calcium intake may be a significant driver of hypercalcemia in individuals taking vitamin D. The dose-dependent increase in incidence of hypercalciuria and mild hypercalcemia suggests that for individuals taking high-dose vitamin D, it may be prudent to assess calcium intake and evaluate biochemical measures of calcium metabolism. However, in the 400-IU group that was following the National Academy of Medicine-recommended dietary allowance of calcium and vitamin D<sub>3</sub>, 17% had hypercalciuria on at least 1 occasion over the study duration.

### Limitations

This study has several limitations. First, degradation of 2 lots of the vitamin D solution administered to participants in

the 10 000-IU per day group between months 18 and 36 resulted in those participants receiving less than the designated dose. Despite this occurrence, dose-dependent changes were observed.

Second, participants with osteoporosis or with 25(OH)D levels of less than 30 nmol/L were excluded from this study. It is possible that participants with osteoporosis or low 25(OH)D levels would have responded differently to high-dose vitamin D supplementation, which would need to be explored following a different study design. The mean normal baseline 25(OH)D levels in this study were above the National Academy of Medicine-recommended levels considered adequate for bone health in 97.5% of the population (50 nmol/L), and are similar to the baseline levels in the VITAL (Vitamin D and Omega-3) trial.<sup>39</sup>

Third, this study did not include a placebo control group. The participants in the 400-IU group served as a reference group in the study design, receiving the National Academy of Medicine-recommended intake for adults younger than age 70 (accounting for dietary input). Affirming their appropriateness as a reference group, their serum 25(OH)D did not change throughout the study, and a dose-dependent effect on bone relative to this 400-IU group was shown.

Fourth, since the effect of high-dose vitamin D supplementation on HR-pQCT measurements of volumetric BMD were in the opposite direction of the hypothesized effect, it is not appropriate to interpret the findings as proof of skeletal harm. These unanticipated results should be regarded as hypothesis-generating for future studies.

### Conclusions

Among healthy adults, treatment with vitamin D for 3 years at a dose of 4000 IU per day or 10 000 IU per day, compared with 400 IU per day, resulted in statistically significant lower radial BMD; tibial BMD was significantly lower only with the daily dose of 10 000 IU. There were no significant differences in bone strength at either the radius or tibia. These findings do not support a benefit of high-dose vitamin D supplementation for bone health; further research would be needed to determine whether it is harmful.

#### ARTICLE INFORMATION

**Accepted for Publication:** July 22, 2019.

**Correction:** This article was corrected online on November 19, 2019, because of incorrect data placement in Figure 3.

**Author Contributions:** Drs Hanley and Boyd had full access to all of the data in the study and take responsibility for the integrity of the data and the accuracy of the data analysis.

**Concept and design:** Hanley, Boyd.

**Acquisition, analysis, or interpretation of data:** All authors.

**Drafting of the manuscript:** Burt, Billington, Rose, Boyd.

**Critical revision of the manuscript for important intellectual content:** All authors.

**Statistical analysis:** Billington, Rose, Raymond, Boyd.

**Obtained funding:** Hanley, Boyd.

**Administrative, technical, or material support:** Burt,

Billington, Hanley, Boyd.

**Supervision:** Hanley, Boyd.

**Conflict of Interest Disclosures:** Dr Billington reported receipt of grants and other (for scientific advisory board participation) from Amgen and Eli Lilly outside the submitted work. Dr Hanley reported receipt of grants and personal fees (for speaker honorarium) from Amgen and grants from Eli Lilly outside the submitted work. Dr Boyd reported other (co-owner of software company that performs finite element analysis; the software was used to analyze the data in this study, but it was provided completely free of charge and no compensation was received for this work) from Numerics88 Solutions and other (for panel participation honorarium) from Amgen outside the

submitted work. No other disclosures were reported.

**Funding/Support:** Funding was provided by Pure North S'Energy Foundation in response to an investigator-initiated research grant proposal.

**Role of the Funder/Sponsor:** Pure North S'Energy Foundation had no role in the design and conduct of the study; collection, management, analysis, and interpretation of the data; preparation, review, or approval of the manuscript; and decision to submit the manuscript for publication.

**Additional Contributions:** The authors wish to thank the trial participants and the staff of the McCaig Institute for Bone and Joint Health, University of Calgary, including Sharon Gaudet, BN; Michelle Kan, MSc; Jolene Allan, Jane Allan, RN; Anne Cooke, BSc; Stephanie Kwong, BSc;

Taryn Grant, BSc; Bernice Love, RN; Amanda Sellar-Bouchard, BA; Patricia Hodgins, BN; and Mary Delong, MN, for implementing the trial and collecting the data. The persons listed in this section were paid staff. In addition, we extend our appreciation to the data safety monitoring board for its commitment to the safety of the study participants.

**Data Sharing Statement:** See Supplement 4. The authors commit to making relevant anonymized patient-level data available to researchers who provide a methodologically sound proposal. Data will be available from 6 months following publication until 5 years following publication. To gain access, data requestors will need to sign a data access agreement.

## REFERENCES

- Macdonald HM, Reid IR, Gamble GD, Fraser WD, Tang JC, Wood AD. 25-Hydroxyvitamin D threshold for the effects of vitamin D supplements on bone density. *J Bone Miner Res*. 2018;33(8):1464-1469. doi:10.1002/jbmr.3442
- Reid IR, Horne AM, Mihov B, et al. Effect of monthly high-dose vitamin D on bone density in community-dwelling older adults substudy of a randomized controlled trial. *J Intern Med*. 2017;282(5):452-460. doi:10.1111/joim.12651
- Reid IR, Bolland MJ, Grey A. Effects of vitamin D supplements on bone mineral density. *Lancet*. 2014;383(9912):146-155. doi:10.1016/S0140-6736(13)61647-5
- Bolland MJ, Grey A, Avenell A. Effects of vitamin D supplementation on musculoskeletal health. *Lancet Diabetes Endocrinol*. 2018;6(11):847-858. doi:10.1016/S2213-8587(18)30265-1
- Avenell A, Mak JCS, O'Connell D. Vitamin D and vitamin D analogues for preventing fractures in post-menopausal women and older men. *Cochrane Database Syst Rev*. 2014;39(4):CD000227. doi:10.1002/14651858.CD000227.pub4.
- Institute of Medicine. *Dietary Reference Intakes for Calcium and Vitamin D*. Washington, DC: The National Academies Press; 2011.
- Hanley DA, Cranney A, Jones G, et al; Guidelines Committee of the Scientific Advisory Council of Osteoporosis Canada. Vitamin D in adult health and disease. *CMAJ*. 2010;182(12):E610-E618. doi:10.1503/cmaj.080663
- Vieth R, Chan PC, MacFarlane GD. Efficacy and safety of vitamin D3 intake exceeding the lowest observed adverse effect level. *Am J Clin Nutr*. 2001;73(2):288-294. doi:10.1093/ajcn/73.2.288
- Rooney MR, Harnack L, Michos ED, Ogilvie RP, Sempos CT, Lutsey PL. Trends in use of high-dose vitamin D supplements exceeding 1000 or 4000 international units daily, 1999-2014. *JAMA*. 2017;317(23):2448-2450. doi:10.1001/jama.2017.4392
- Grimnes G, Joakimsen R, Figenschau Y, Torjesen PA, Almås B, Jorde R. The effect of high-dose vitamin D on bone mineral density and bone turnover markers in postmenopausal women with low bone mass—a randomized controlled 1-year trial. *Osteoporos Int*. 2012;23(1):201-211. doi:10.1007/s00198-011-1752-5
- Samelson EJ, Broe KE, Xu H, et al. Cortical and trabecular bone microarchitecture as an independent predictor of incident fracture risk in older women and men in the Bone Microarchitecture International Consortium (BoMIC). *Lancet Diabetes Endocrinol*. 2019;7(1):34-43. doi:10.1016/S2213-8587(18)30308-5
- Burt LA, Gaudet S, Kan M, et al. Methods and procedures for: a randomized double-blind study investigating dose-dependent longitudinal effects of vitamin D supplementation on bone health. *Contemp Clin Trials*. 2018;67:68-73. doi:10.1016/j.cct.2018.02.009
- Bouillon R. Genetic and racial differences in the vitamin D endocrine system. *Endocrinol Metab Clin North Am*. 2017;46(4):1119-1135. doi:10.1016/j.ecl.2017.07.014
- Wu H, Gozdzik A, Barta JL, et al. The development and evaluation of a food frequency questionnaire used in assessing vitamin D intake in a sample of healthy young Canadian adults of diverse ancestry. *Nutr Res*. 2009;29(4):255-261. doi:10.1016/j.nutres.2009.03.006
- Papaioannou A, Morin S, Cheung AM, et al. 2010 clinical practice guidelines for the diagnosis and management of osteoporosis in Canada: summary. *CMAJ*. 2010;182(17):1864-1873. doi:10.1503/cmaj.100771
- Ellouz R, Chapurlat R, van Rietbergen B, Christen P, Pialat JB, Boutroy S. Challenges in longitudinal measurements with HR-pQCT. *Bone*. 2014;63:147-157. doi:10.1016/j.bone.2014.03.001
- Manske SL, Davison EM, Burt LA, Raymond DA, Boyd SK. The estimation of second-generation HR-pQCT from first-generation HR-pQCT using in vivo cross-calibration. *J Bone Miner Res*. 2017;32(7):1514-1524. doi:10.1002/jbmr.3128
- Biodex Medical Systems Inc. Biosway portable balance system. 2017. <http://www.biodex.com/physical-medicine/products/balance/biosway-portable>. August 30, 2018.
- Roberts HC, Denison HJ, Martin HJ, et al. A review of the measurement of grip strength in clinical and epidemiological studies. *Age Ageing*. 2011;40(4):423-429. doi:10.1093/ageing/afr051
- Podsiadlo D, Richardson S. The timed "Up & Go". *J Am Geriatr Soc*. 1991;39(2):142-148. doi:10.1111/j.1532-5415.1991.tb01616.x
- Ware JE, Kosinski M, Dewey JE. *How to Score Version 2 of the SF-36 Health Survey*. Lincoln, Rhode Island: QualityMetric; 2000.
- Burt L, Ménard AL, Macdonald HM, Hanley DA, Boyd SK. A five-year longitudinal study of site-specific changes in bone quality in the Calgary population-based cohort: an HR-pQCT study [2013 ASBMR Annual Meeting oral presentation 1082]. *J Bone Miner Res*. 2013;28(suppl 1).
- Randomised trial of intravenous streptokinase, oral aspirin, both, or neither among 17 187 cases of suspected acute myocardial infarction. *Lancet*. 1988;2(8607):349-360.
- Coffman CJ, Edelman D, Woolson RF. To condition or not condition? analysing 'change' in longitudinal randomised controlled trials. *BMJ Open*. 2016;6(12):e013096. doi:10.1136/bmjopen-2016-013096
- Molenberghs G, Thijs H, Jansen I, et al. Analyzing incomplete longitudinal clinical trial data. *Biostatistics*. 2004;5(3):445-464. doi:10.1093/biostatistics/kxh001
- Wellek S, Ziegler A. Cochran-Armitage test versus logistic regression in the analysis of genetic association studies. *Hum Hered*. 2012;73(1):14-17. doi:10.1159/000334085
- Aloia J, Dhaliwal R, Mikhail M, et al. Free 25(OH)D and calcium absorption, PTH, and markers of bone turnover. *J Clin Endocrinol Metab*. 2015;100(11):4140-4145. doi:10.1210/jc.2015-2548
- Takeda S, Yoshizawa T, Nagai Y, et al. Stimulation of osteoclast formation by 1,25-dihydroxyvitamin D requires its binding to vitamin D receptor (VDR) in osteoblastic cells. *Endocrinology*. 1999;140(2):1005-1008. doi:10.1210/endo.140.2.6673
- Nakamichi Y, Udagawa N, Suda T, Takahashi N. Mechanisms involved in bone resorption regulated by vitamin D. *J Steroid Biochem Mol Biol*. 2018;177:70-76. doi:10.1016/j.jsbmb.2017.11.005
- Jorde R, Sneve M, Torjesen PA, Figenschau Y, Hansen J-B, Grimnes G. No significant effect on bone mineral density by high doses of vitamin D3 given to overweight subjects for one year. *Nutr J*. 2010;7(9):1. doi:10.1186/1475-2891-9-1.
- Hansen KE, Johnson RE, Chambers KR, et al. Treatment of vitamin D insufficiency in postmenopausal women. *JAMA Intern Med*. 2015;175(10):1612-1621. doi:10.1001/jamainternmed.2015.3874
- Pop LC, Sukumar D, Schneider SH, et al. Three doses of vitamin D, bone mineral density, and geometry in older women during modest weight control in a 1-year randomized controlled trial. *Osteoporos Int*. 2017;28(1):377-388. doi:10.1007/s00198-016-3735-z
- Smith LM, Gallagher JC, Kaufmann M, Jones G. Effect of increasing doses of vitamin D on bone mineral density and serum N-terminal telopeptide in elderly women. *J Intern Med*. 2018;284(6):685-693. doi:10.1111/joim.12825
- Sanders KM, Nicholson GC, Ebeling PR. Is high dose vitamin D harmful? *Calcif Tissue Int*. 2013;92(2):191-206. doi:10.1007/s00223-012-9679-1
- Sanders KM, Stuart AL, Williamson EJ, et al. Annual high-dose oral vitamin D and falls and fractures in older women. *JAMA*. 2010;303(18):1815-1822. doi:10.1001/jama.2010.594
- Khaw K-T, Stewart AW, Waayer D, et al. Effect of monthly high-dose vitamin D supplementation on falls and non-vertebral fractures: secondary and post-hoc outcomes from the randomised, double-blind, placebo-controlled ViDA trial. *Lancet Diabetes Endocrinol*. 2017;5(6):438-447. doi:10.1016/S2213-8587(17)30103-1
- Malih Z, Wu Z, Stewart AW, Lawes CMM, Scragg R. Hypercalcemia, hypercalciuria, and kidney stones in long-term studies of vitamin D supplementation. *Am J Clin Nutr*. 2016;104(4):1039-1051. doi:10.3945/ajcn.116.134981
- Aloia JF, Katumuluwa S, Stolberg A, et al. Safety of calcium and vitamin D supplements, a randomized controlled trial. *Clin Endocrinol (Oxf)*. 2018;89(6):742-749. doi:10.1111/cen.13848
- Manson JE, Cook NR, Lee I-M, et al; VITAL Research Group. Vitamin D supplements and prevention of cancer and cardiovascular disease. *N Engl J Med*. 2019;380(1):33-44. doi:10.1056/NEJMoa1809944